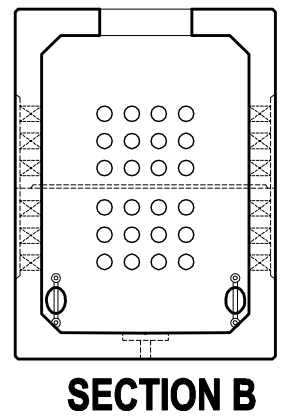
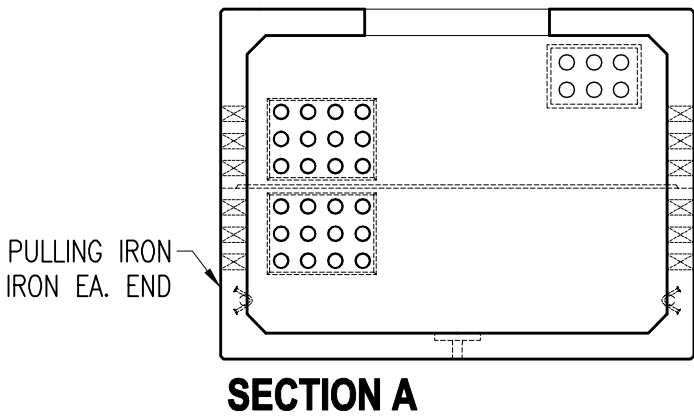
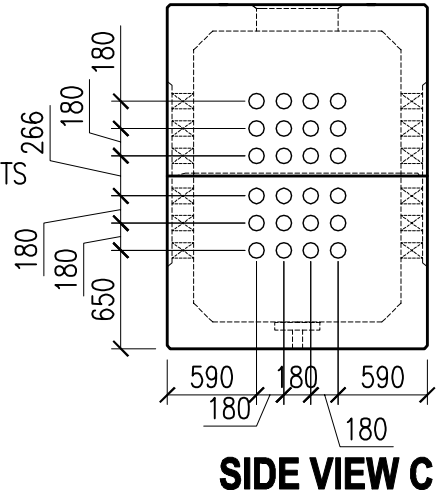
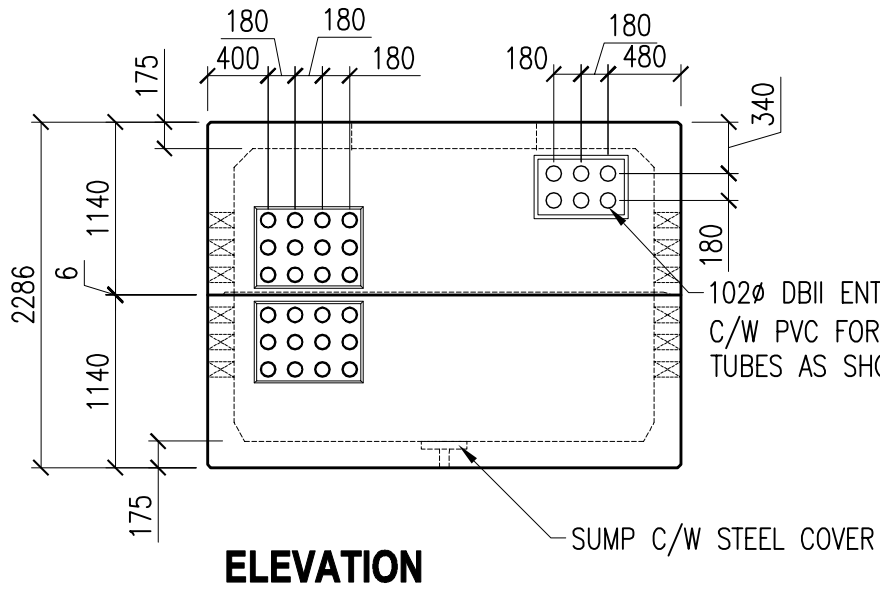


NOTE: 2.1M TOTAL BURY DEPTH



**westcon**  
precast inc.

**TYPE "T" VAULT**  
**1.4m x 2.9m x 2.0m**

CONCRETE	RELEASE 28 day 15 MPa 35 MPa	AIR 6-8%	SLUMP 70mm	TYPE 50	DWG. NO. <b>W1-06</b>
VOLUME	SELF WEIGHT				
4.92 m <sup>3</sup>	12,100 kg	26,540 lbs			
DATE: FEB. 2015	CODE: 0001	BY: CW	Rev. <b>O</b>		