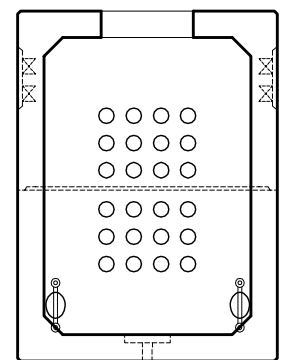
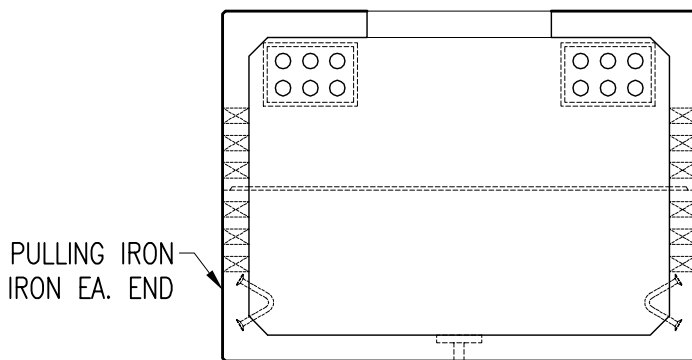
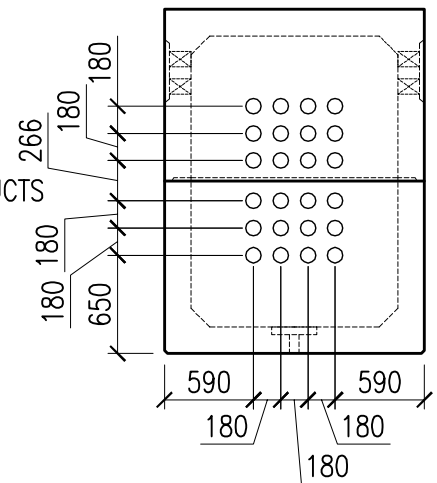
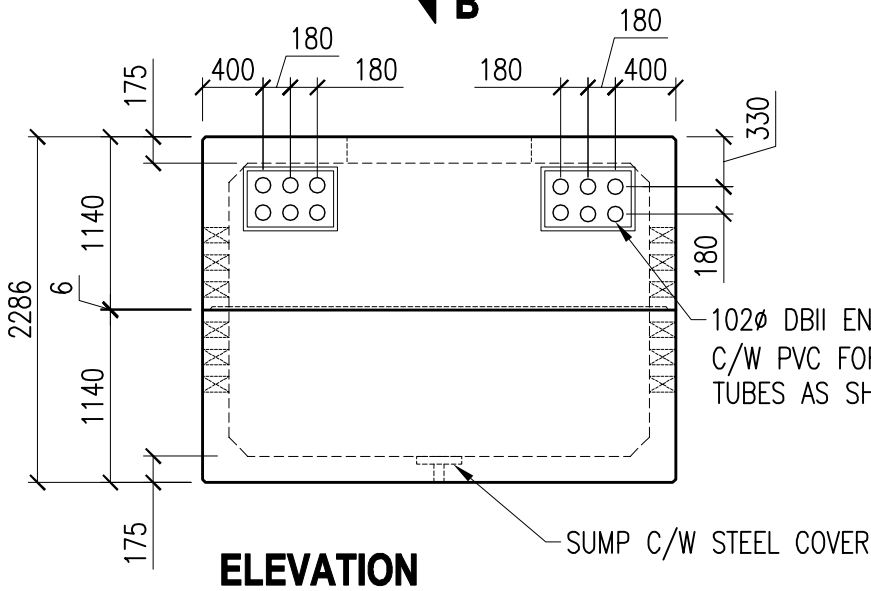


NOTE: 2.1M TOTAL BURY DEPTH



SECTION A

SECTION B

westcon
precast inc.

TYPE "A" VAULT
1.4m x 2.9m x 2.0m

CONCRETE	RELEASE 28 day 15 MPa 35 MPa	AIR 6-8%	SLUMP 70mm	TYPE 50	DWG. NO. W1-04
VOLUME	SELF WEIGHT				
4.92 m ³	12,100 kg	26,540 lbs			
DATE: FEB. 2015	CODE: 0001	BY: CW	Rev. O		