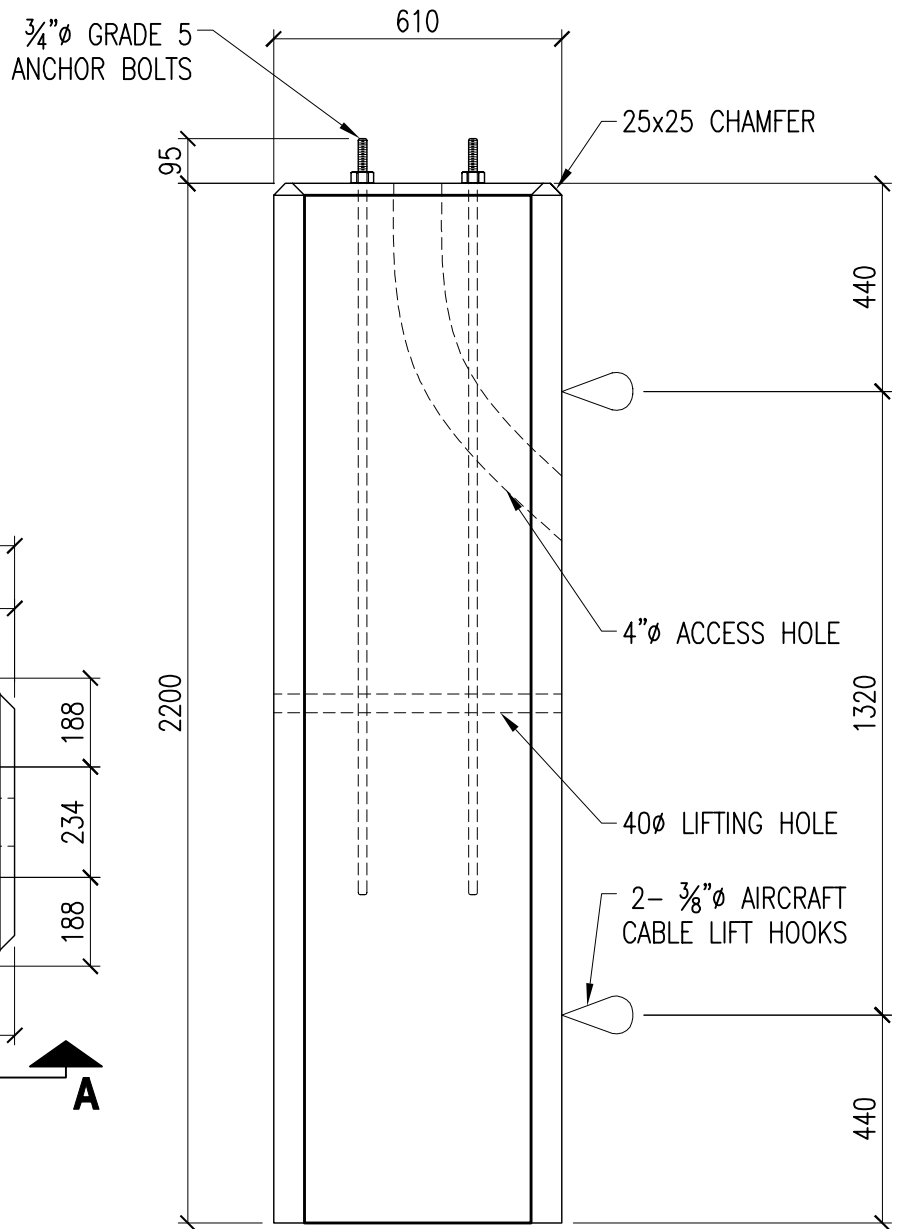


**PLAN VIEW**



**ELEVATION A**

**westcon**  
precast inc.

**LIGHT POLE BASE**  
610x610x2200 | 330 BCD

CONCRETE	RELEASE 28 day 15 MPa 35 MPa	AIR 6-8%	SLUMP 75mm	TYPE 50	DWG. NO. <b>W4-09</b>
VOLUME	SELF WEIGHT				
0.85 m <sup>3</sup>	2085 kg	4590 lbs			
DATE: FEB. 2015	CODE: 0100	BY: CW	Rev. <b>O</b>		