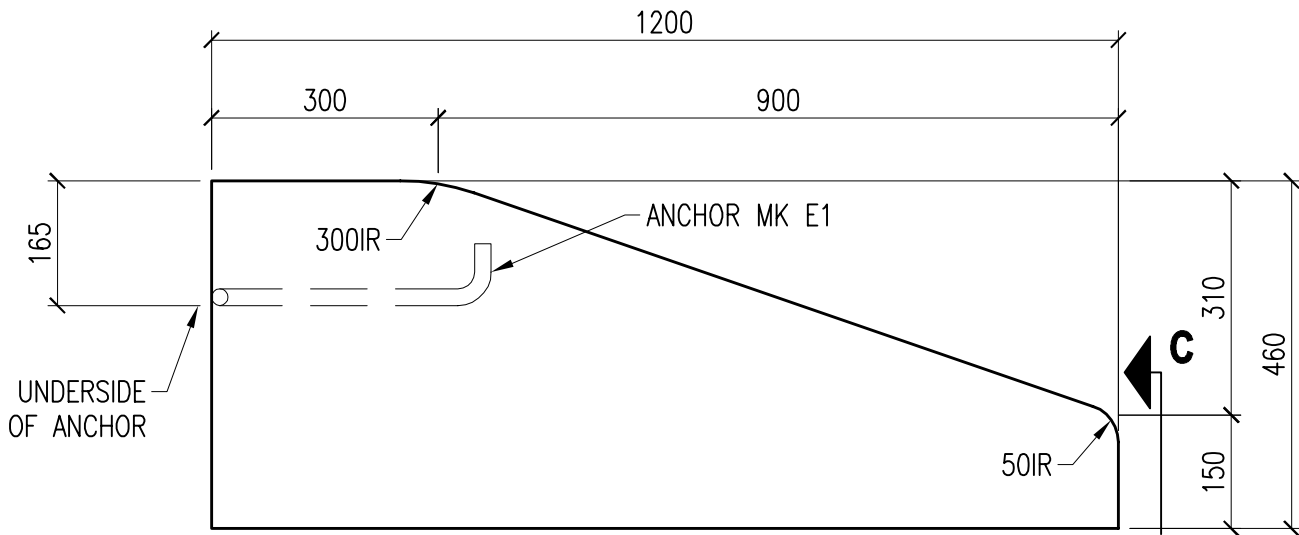


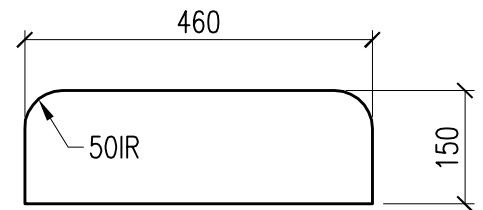
**CBN-H** (HOOK SECTION)



**CBNE** (EYE SECTION)

ALL NOT SHOWN SIMILAR TO CBN-H

**ELEVATION**



**VIEW C**

GENERAL NOTE:

1. FIBRILATED FIBRE STRAND REINFORCED CONCRETE TO BE USED FOR BULL-NOSE (CBN).
2. FIBRILATED FIBRE STRAND REINFORCED CONCRETE MAY BE SUBSTITUTED FOR STEEL REINFORCED CONCRETE IN LOW BARRIER (CLB-H&E)
3. MATERIALS AND QUALITY OF WORK TO BE IN ACCORDANCE WITH SECTION 941
4. STANDARD CBN-E MAY BE MANUFACTURED ONLY PRIOR WRITTEN PERMISSION FROM THE HIGHWAY SAFETY BRANCH.

**westcon**  
precast inc.

**BULL NOSE 460mm  
CBN-H & CBN-E**

CONCRETE	RELEASE 28 day 15 MPa 35 MPa	AIR 6-8%	SLUMP 75mm	TYPE 50	DWG. NO. <b>W5-17</b>
VOLUME	SELF WEIGHT				
0.185m <sup>3</sup>	465 kg	1030 lbs			Rev. <b>0</b>
DATE: FEB. 2015	CODE: 0001	BY: CW			